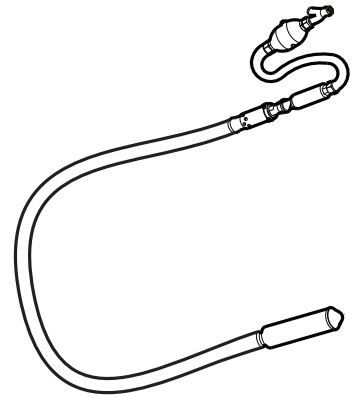




**Chicago  
Pneumatic**

## **Spare parts list**

**Pneumatic concrete vibrators  
CP 2190**





# Contents

<b>General information</b> .....	5
<b>Spare parts list</b> .....	6
<b>Accessories</b> .....	9
Hose rolls.....	9
Water separator.....	9
CP airolene plus tool oil.....	10



## General information

This spare parts list applies to the following:

Part number	Description
T019308	Pneumatic concrete vibrator CP 2190

Use only authorized parts. Any damage or malfunction caused by the use of unauthorized parts is not covered by Warranty or Product Liability. Any unauthorized use or copying of the contents or any part thereof is prohibited. This applies in particular to trademarks, model denominations, part numbers, and drawings.

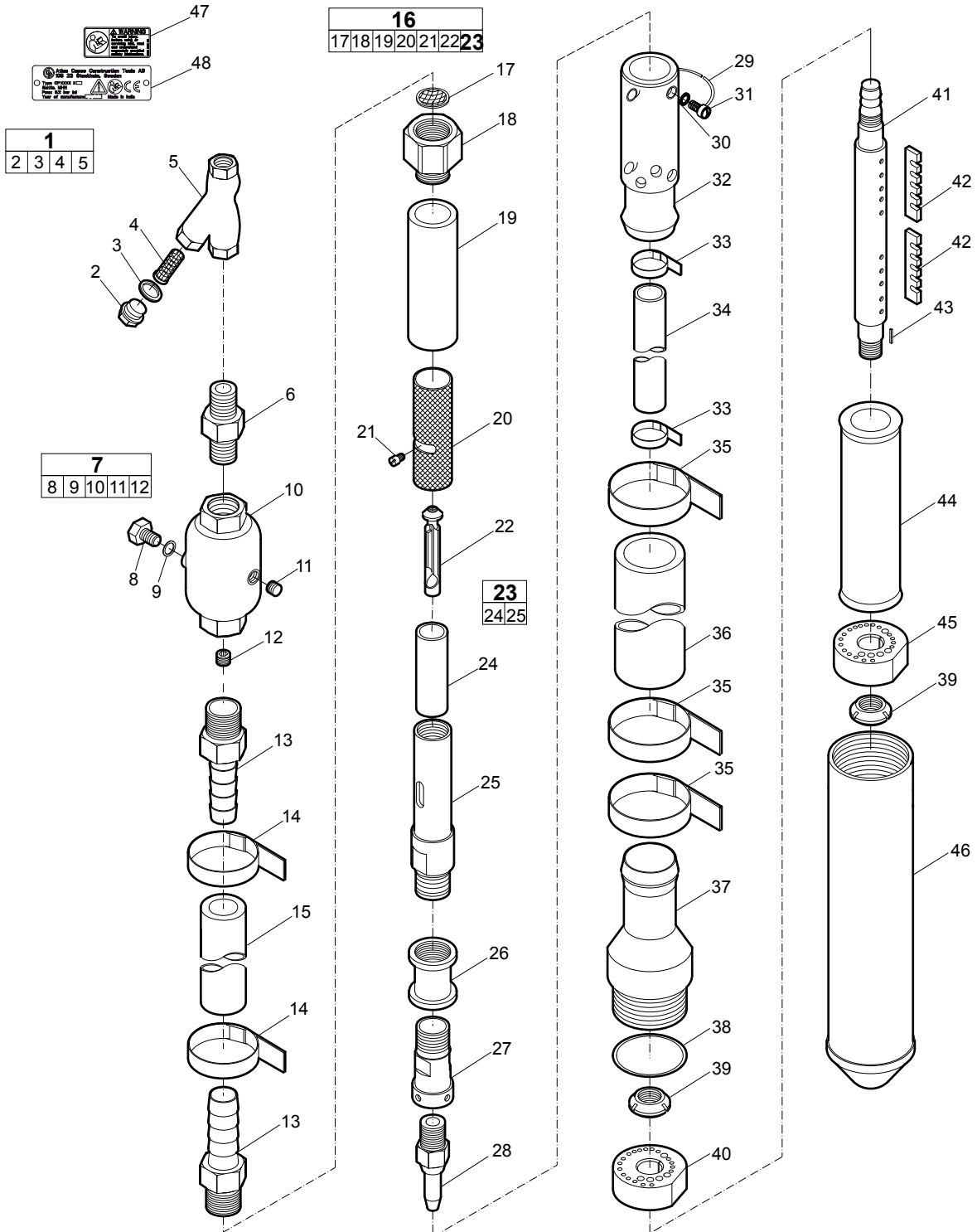
### Instructions for use

This spare parts list contains no safety regulations and is merely intended to assist in the ordering of spare parts.

For information about operating, servicing, or repairing, the relevant Safety and operating instructions must be consulted at all costs.

Please observe the safety instructions listed in the relevant Safety and operating instructions!

# Spare parts list



No.	Description	Remark	Quantity	Part number
<b>1(2-5)</b>	<b>Strainer - live air, complete</b>		1	C061460
2	Plug - gland		1	-
3	Gasket		1	-
4	Screen - air strainer		1	-
5	Strainer - live air		1	-
6	Nipple		1	F016602
<b>7(8-12)</b>	<b>Oiler, complete</b>		1	C015137
8	Plug - oiler body		1	C015155
9	Washer - plug		1	C015156
10	Oiler		1	-
11	Plug - pipe	Ø ¾ in. Ø 9.5 mm	1	C077941
12	Plug - pipe	Ø ¼ in. Ø 6.5 mm	1	C068799
13	Nipple - hose		2	C073940
14	Clamp - hose		2	C090674
15	Hose - intake	Ø ¾ in. Ø 19 mm	1	C060332
<b>16(17-22,23)</b>	<b>Throttle, complete</b>		1	C060364
17	Strainer - air		1	C037292
18	Cap - handle		1	C037293
19	Cover - throttle handle		1	S061798
20	Sleeve - handle		1	C014054
21	Screw - handle		1	C014055
22	Plug - handle		1	C010046
<b>23(24-25)</b>	<b>Stem - live air handle, complete</b>		1	F813723
24	Bushing		1	-
25	Stem - live air handle		1	-
26	Coupling - pipe	Ø ¾ in. Ø 19 mm	1	C015026
27	Nipple - swivel		1	C038683
28	Nipple - hose		1	P002079
29	Wire - lock		1	C039438
30	Lock washer	Ø ¼ in. Ø 6.5 mm	4	C012058
31	Screw	0.242-24 x 7/16	4	C062118
32	Collar - exhaust swivel		1	C039584
33	Clamp - hose		2	C090672
34	Hose - live air	10 ft 3 m	1	C069153
35	Clamp - hose		3	C090677
36	Hose - exhaust		1	C069151
37	Cap - end		1	C105367
38	O-ring		1	R110210
39	Nut - bearing lock		2	R041208
40	Plate - upper end		1	C105372
41	Shaft - eccentric		1	C105369
42	Blade		2	C105373
43	Key		1	US025392
44	Weight - eccentric		1	C105370
45	Plate - lower end		1	C105371

<b>No.</b>	<b>Description</b>	<b>Remark</b>	<b>Quantity</b>	<b>Part number</b>
46	Shell and cap		1	C105363
47	Safety label		1	3310 1602 00
48	Data plate		1	-



# Accessories

## Hose rolls

### Metric

Description	Inner diameter (mm)	Thickness (mm)	Maximum working pressure (bar)	Length of roll (m)	Weight (kg)	Part number
Red-X hose roll	19	2.0	20	60	11	8900 0050 10
Red-X hose roll	19	2.0	20	100	18	8900 0050 11
Red-X hose roll	19	2.0	20	200	36	8900 0050 12
Red-X hose roll	25	2.5	20	60	15	8900 0050 20
Red-X hose roll	25	2.5	20	100	25	8900 0050 21
Red-X hose roll	25	2.5	20	200	50	8900 0050 22

### Imperial

Description	Inner diameter (in.)	Thickness (in.)	Maximum working pressure (psi)	Length of roll (ft)	Weight (lb)	Part number
Red-X hose roll	$\frac{3}{4}$	$\frac{5}{64}$	290	195	24.3	8900 0050 10
Red-X hose roll	$\frac{3}{4}$	$\frac{5}{64}$	290	325	39.7	8900 0050 11
Red-X hose roll	$\frac{3}{4}$	$\frac{5}{64}$	290	650	79.4	8900 0050 12
Red-X hose roll	1	$\frac{3}{32}$	290	195	33.1	8900 0050 20
Red-X hose roll	1	$\frac{3}{32}$	290	325	55.1	8900 0050 21
Red-X hose roll	1	$\frac{3}{32}$	290	650	110.2	8900 0050 22

## Water separator

### Metric

Description	Hose connection (mm)	Air flow (l/s)	Weight (kg)	Part number
Water separator ( $\frac{3}{4}$ in. BSP)	20	61	0.8	8900 0050 00

### Imperial

Description	Hose connection (in.)	Air flow (foot <sup>3</sup> /min)	Weight (lb)	Part number
Water separator ( $\frac{3}{4}$ in. NPT)	$\frac{3}{4}$	130	1.8	8900 0050 01

## CP airolene plus tool oil

---

### Metric

Description	Oil volume (l)	Part number
5 l container	5	8099 0202 49
4 x 5 l container	20	8099 0202 51

### Imperial

Description	Oil volume (US gallon)	Part number
1.32 US gallon container	1.32	8099 0202 49
4 x 1.32 US gallon container	5.28	8099 0202 51



