

CLAY AND TRENCH DIGGERS

TOOL MAINTENANCE & REPAIR INFORMATION

FIELD OPERATION

Before:

1. Fill the built-in oil reservoir located in the handle with Air Tool oil or 10W equivalent.
2. Tighten nuts on the backhead bolts.
3. Check for play in fronthead with steel.
4. Check all nuts to ensure they are tight on the tool.
5. Replace retainer if worn.
6. Clean any water and/or dirt from air hose before connecting it to the tool.

During:

1. For your safety and that of others, keep tool against work at all times!
2. When moving from one work area to another, shut off tool.
3. Never run tool when steel bit is not against work.
4. Do not use tool as a wedge or prying instrument.
5. Refill oil reservoir approximately every two hours.
6. Check all nuts to ensure they are tight on the tool.

After:

1. Flush tool with cleaning solvent, then refill with Air Tool oil or 10W grade equivalent.
2. Do not leave tool in water or in dirt.
3. Check all nuts to ensure they are tight on the tool.
4. Store the tool well oiled.

**REMEMBER: PREVENTIVE MAINTENANCE
WILL ASSURE MAXIMUM
PERFORMANCE FROM ALL
OF YOUR APT TOOLS.**

TROUBLE SHOOTING GUIDE

If the tool runs erratically:

1. Check all nuts to ensure they are tight on the tool.
2. Flush cleaning solvent through the tool and then refill immediately with Air Tool oil or 10W grade equivalent.

If tool still runs erratically, disassemble and check for rust and/or dirt.

If the tool has an air leakage around the backhead:

1. Tighten up all backhead nuts securely.
2. Disassemble and inspect the backhead to see if the throttle valve or "o"ring seal is damaged.

If the breakers is not hitting hard enough:

1. Check all nuts to ensure they are tight on the tool.
2. If all nuts and bolts are tight, then check for wear on internal parts, if worn, parts should be replaced. Check clearances between piston and cylinder very carefully.

If you cannot shut the tool off:

1. Immediately turn off air source, then disconnect air supply.
2. Disassemble backhead and inspect the throttle valve and "o" rings for damage.

APT

**MODEL 118
CLAY DIGGER**

The rugged APT Model 118 Clay Digger is used for digging clay, shale, hard pan, and frozen ground. The Model 118 is an ideal tool for clearing out dirt under existing foundations and for tunneling under existing structures. This medium weight tool can be used for horizontal and for vertical work. The only difference among the APT Model 117 Paving Breaker, the Model 118 Clay Digger and the Model 119 Trench Digger is the handle. These tools have the same cylinders and the majority of internal parts in common, which makes them very versatile tools for use in various types of work.

SPECIFICATIONS

Part Number	Chuck Size inches	Bore	Stroke	BPM	CFM @ 90 PSI inlet pressure	Weight lbs.	Length inches	Air Inlet NPT
5201	7/8 x 3-1/4	1-3/4	3-3/8	2400	34-36	31	22-1/2	3/8 - Male
5202	1 x 4-1/4	1-3/4	3-3/8	2400	34-36	31	22-1/2	3/8 - Male

**FEATURES**

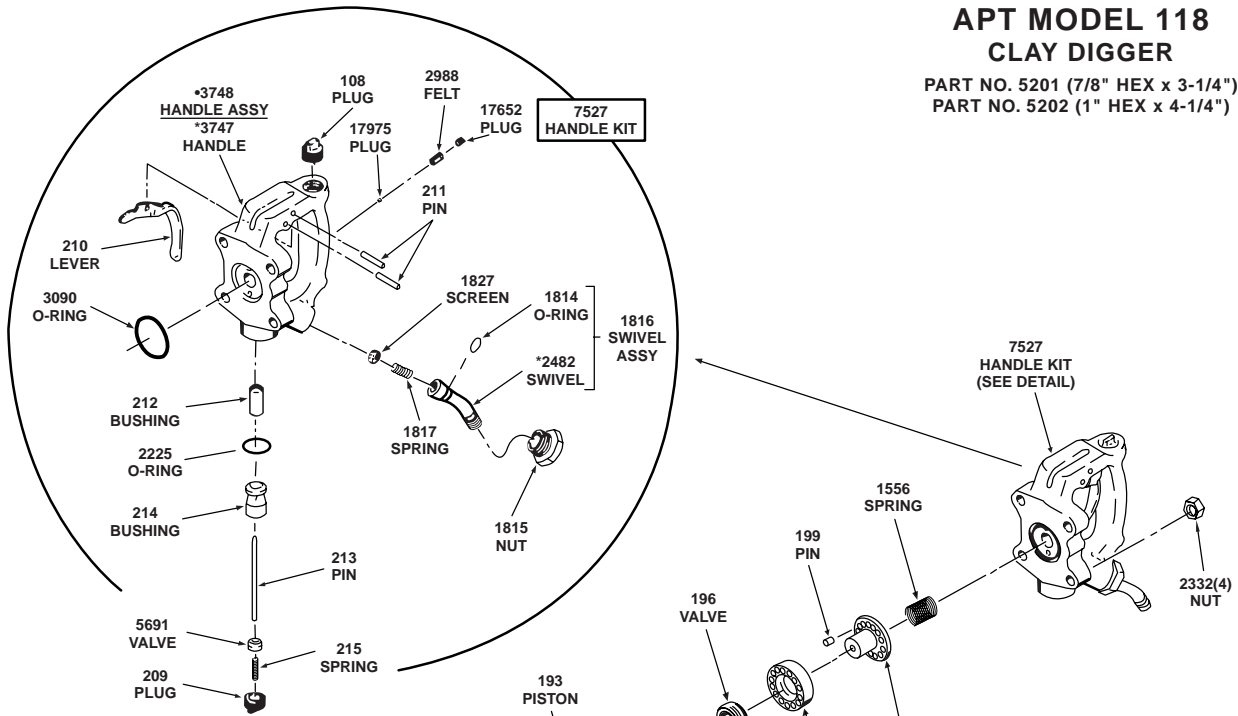
- Built-in automatic oiler
- D-style handle
- Inside trigger for better control and safety
- Automatic valve
- Deep case-hardened drop forged alloy steel cylinders
- Replaceable chuck bushing
- Latch-type retainer

APT

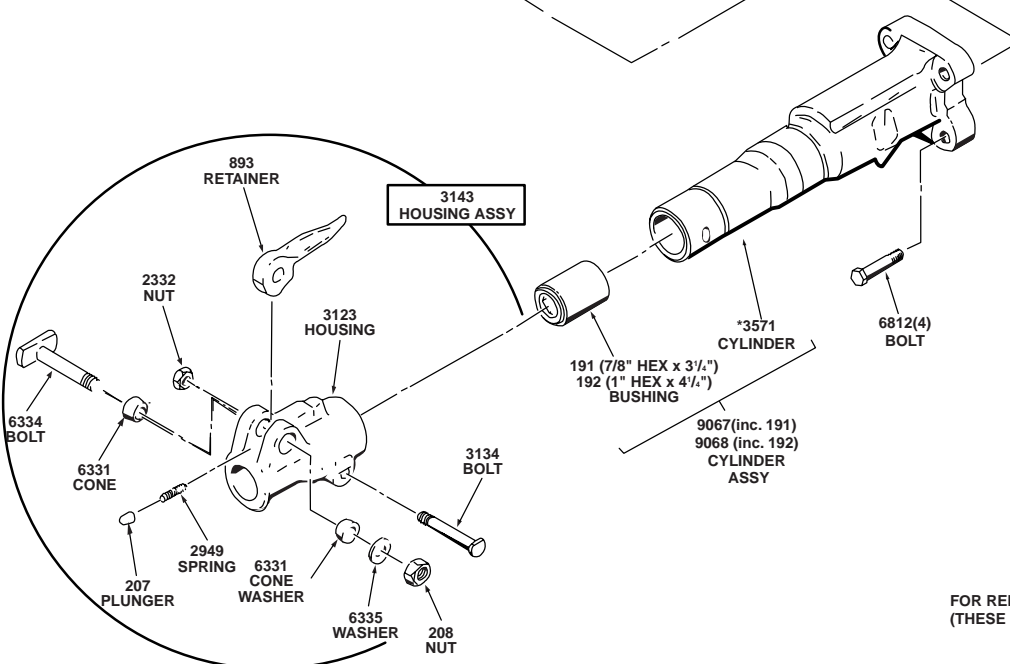
AMERICAN PNEUMATIC TOOL

APT MODEL 118 CLAY DIGGER

PART NO. 5201 (7/8" HEX x 3-1/4")
PART NO. 5202 (1" HEX x 4-1/4")



*3748 Handle Assy Includes:
17652 plug (1), 2988 felt (1), 212 bushing (1), 3747 handle (1),
17975 Oil Metering Plug.



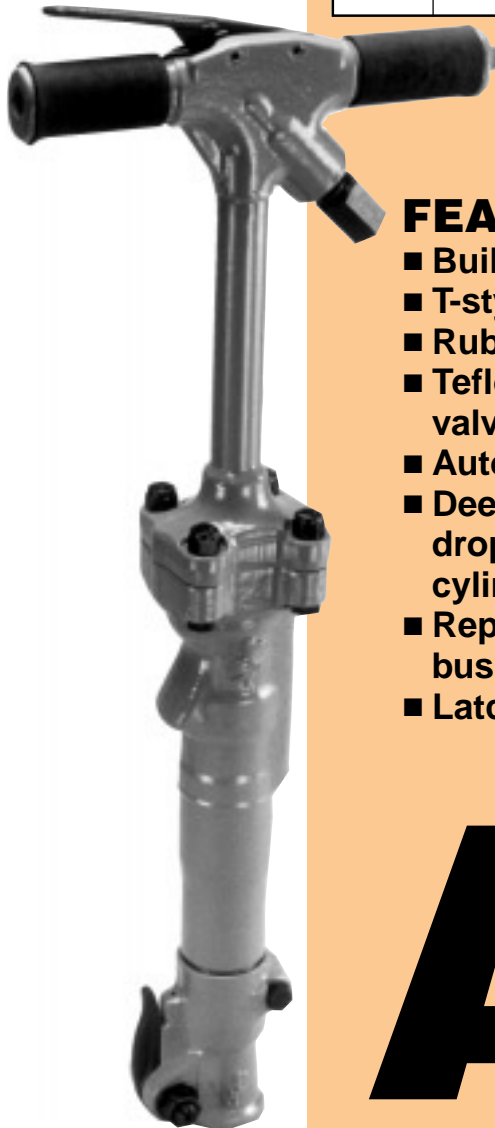
FOR REFERENCE ONLY
(THESE PARTS NOT SOLD SEPARATELY)

MODEL 119 TRENCH DIGGER

The APT Model 119 Trench Digger is used for digging clay, shale, hard pan, and frozen ground. The Model 119 is the perfect tool for digging trenches to lay pipes, phone lines, for foundation work, etc. The only difference among the APT Model 117 Paving Breaker, the Model 118 Clay Digger and the Model 119 Trench Digger is the handle. These tools have the same cylinders and the majority of internal parts in common, which makes them very versatile tools for use in various types of work.

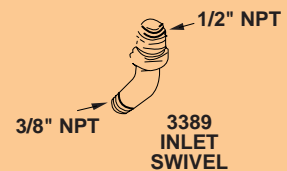
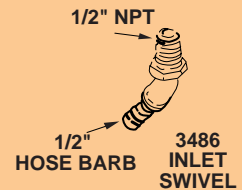
SPECIFICATIONS

Part Number	Chuck Size inches	Bore	Stroke	BPM	CFM @ 90 PSI inlet pressure	Weight lbs.	Length inches	Air Inlet NPT
5203	7/8 x 3-1/4	1-3/4	3-3/8	2400	34-38	37	31	1/2 - female
5204	1 x 4-1/4	1-3/4	3-3/8	2400	34-38	37	31	1/2 - female



FEATURES

- Built-in automatic oiler
- T-style handle
- Rubber handle grips
- Teflon-faced throttle valve
- Automatic valve
- Deep case-hardened drop forged alloy steel cylinders
- Replaceable chuck bushing
- Latch-type retainer

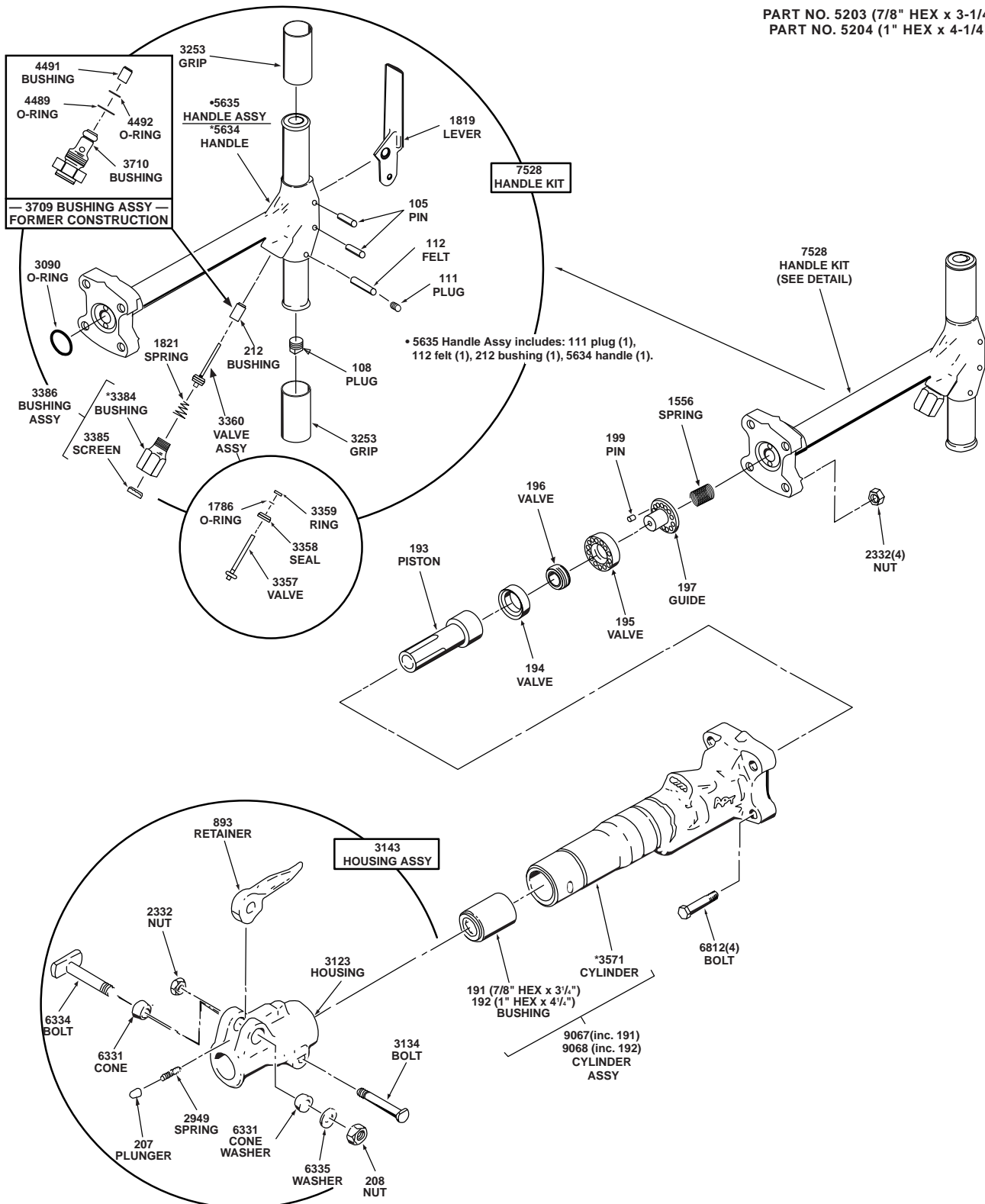


APT

AMERICAN PNEUMATIC TOOL

APT MODEL 119 TRENCH DIGGER

PART NO. 5203 (7/8" HEX x 3-1/4")
PART NO. 5204 (1" HEX x 4-1/4")



* FOR REFERENCE ONLY
(THESE PARTS NOT SOLD SEPARATELY)

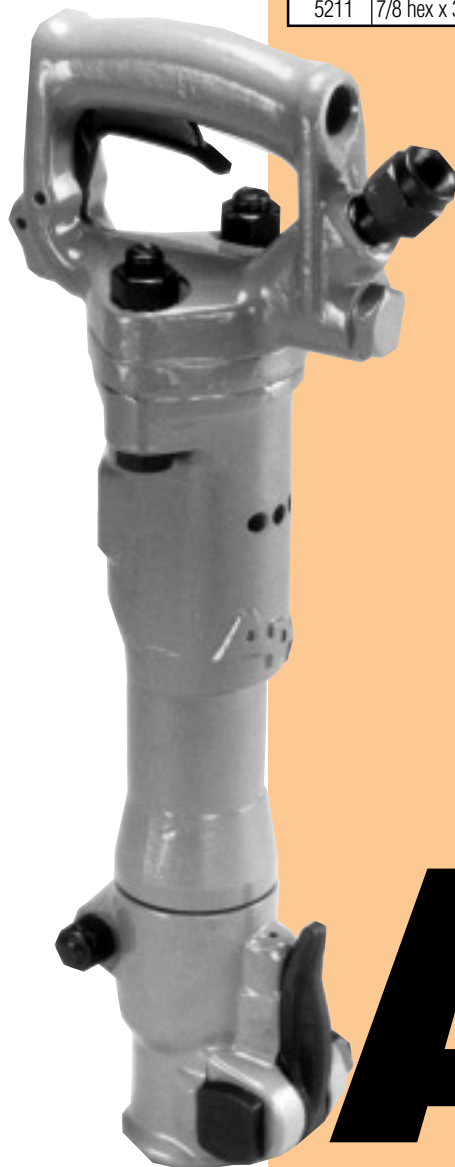
APT

**MODEL 125
CLAY DIGGER**

The APT Model 125 Clay Digger can be used for digging clay, shale, hard pan, and frozen ground. The Model 125 is a lighter weight tool ideal for digging medium to lightly packed soil, for light demolition work as well as for tunneling around existing foundations. With its latch type retainer, lighter weight, and short length, this tool is one of the best and easiest to handle Clay Diggers made today.

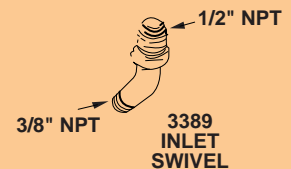
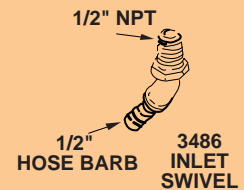
SPECIFICATIONS

Part Number	Chuck Size inches	Bore	Stroke	BPM	CFM @ 90 PSI inlet pressure	Weight lbs.	Length inches	Air Inlet NPT
5209	3/4 sq. x 2-3/4	1-11/16	2-3/4	2120	38-42	21	18-3/8	3/8 - Female
5210	7/8 hex x 2-3/4	1-11/16	2-3/4	2120	38-42	21	18-3/8	3/8 - Female
5211	7/8 hex x 3-1/4	1-11/16	2-3/4	2120	38-42	21	18-3/8	3/8 - Female



FEATURES

- D-style handle
- Inside trigger for better control and safety
- Flapper valve design allows dirt to pass without stopping tool
- Replaceable chuck and piston stem bushing
- Deep case-hardened drop forged alloy steel cylinders
- Replaceable chuck bushing
- Latch-type retainer

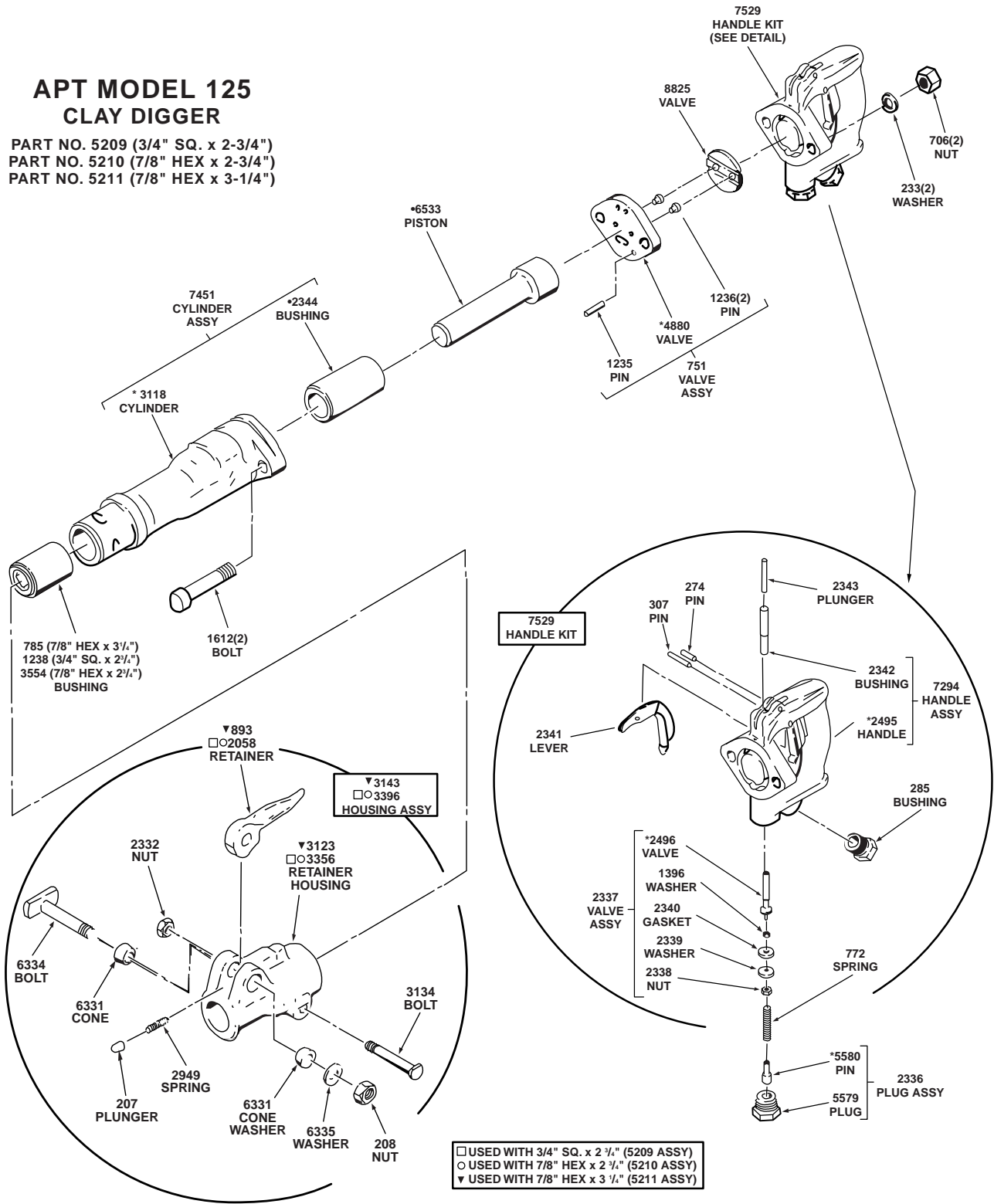


APT

AMERICAN PNEUMATIC TOOL

APT MODEL 125 CLAY DIGGER

PART NO. 5209 (3/4" SQ. x 2-3/4")
 PART NO. 5210 (7/8" HEX x 2-3/4")
 PART NO. 5211 (7/8" HEX x 3-1/4")



* FOR REFERENCE ONLY
 (THESE PARTS NOT SOLD SEPARATELY)

APT